

North facing apartment with impressive proportions.

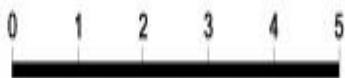
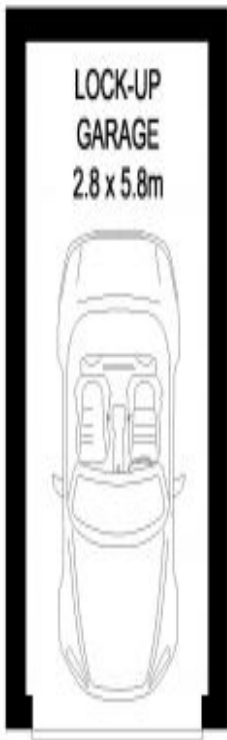
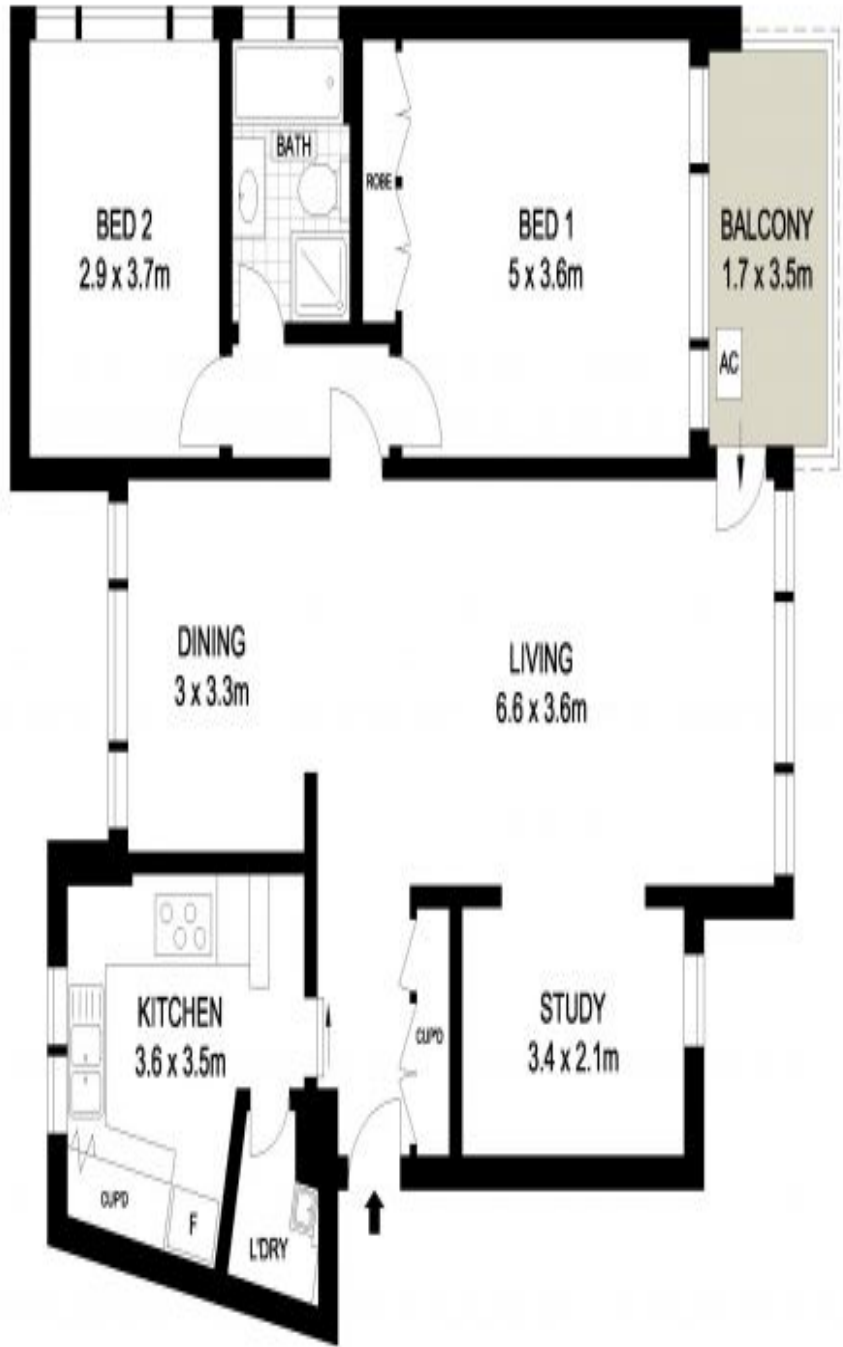
Within the exclusive 'Karoola' building, on an elevated first floor position this superb apartment enjoys a light filled north facing layout with impressive proportions and scenic harbour glimpses. It's a stroll to Edgecliff shops and transport.

- Generous open plan living room flows through to adjoining dining space
- Covered balcony overlooks lush common gardens, captures water glimpses
- Large neatly presented kitchen offers ample scope to update and refresh, separate internal laundry
- Two generously proportioned bedrooms, main includes built-in wardrobes
- Tidy bathroom features bathtub, separate shower, ample natural light
- Separate study has potential to convert to third bedroom
- Air conditioning, integrated storage cupboards, neutral colour palette
- Oversized windows throughout create a phenomenal flow of natural light
- Single lock-up garage plus a separate storage cage
- Convenient to Eastpoint Food Fair, Double Bay village, Rushcutters Bay
- Karoola is a beautifully maintained



SOLD

Council Rates: \$355/qtr (approx)
Contact: Ben Bickmore-Hutt
0418 968 081
Donna Burke
0418 213 210
Type: Apartment
Sold Date: 11/12/2019
Land: 130.7m2



Scale in metres. Indicative only. Dimensions are approximate. All information contained herein is gathered from sources we believe to be reliable. However we cannot guarantee its accuracy and interested persons should rely on their own enquiries.



3/442-446 Edgecliff Road, Edgecliff



Edgecliff, NSW
3/442-446 Edgecliff Road

