



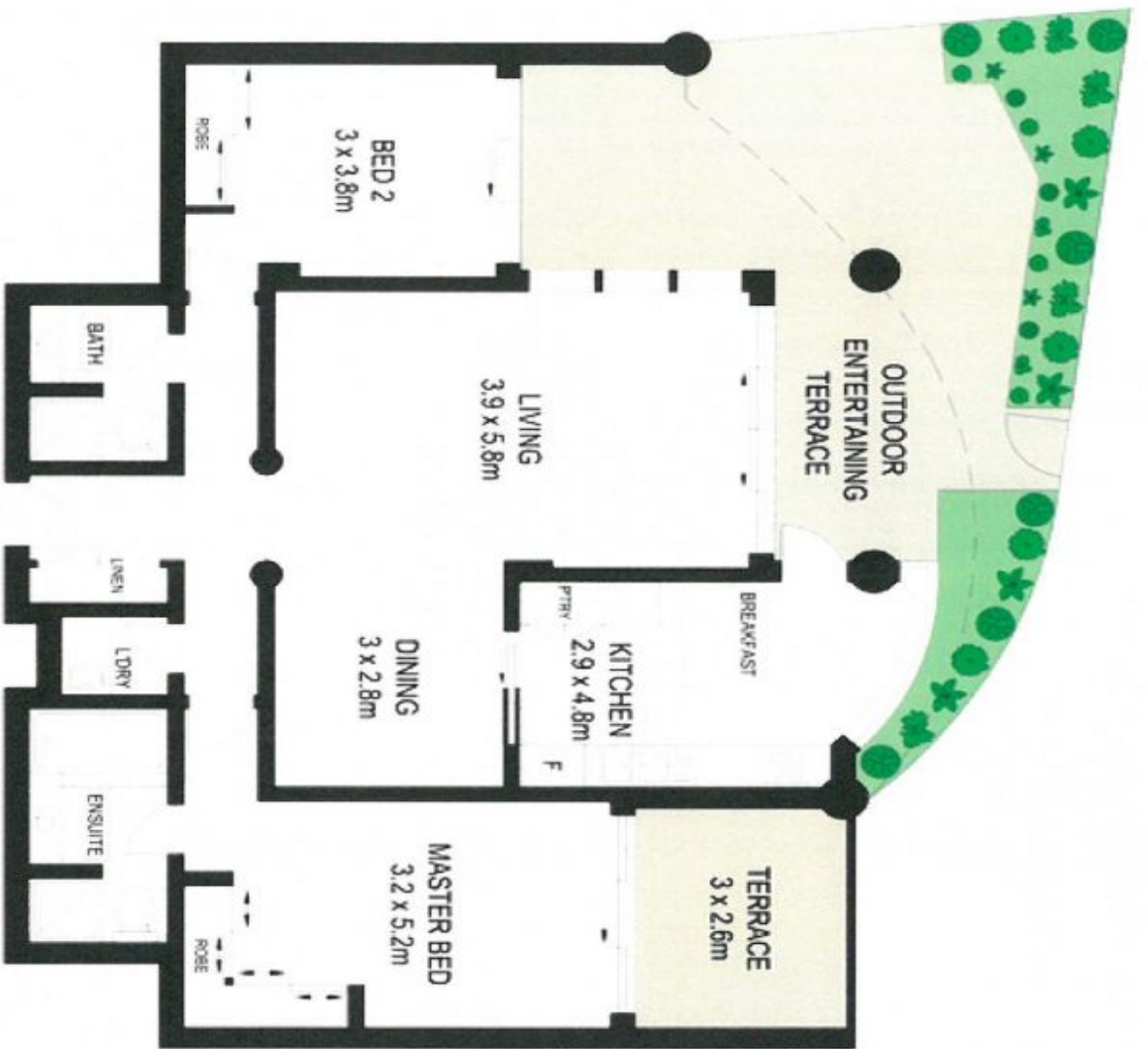
Garden Apartment Bathed In Northern Sunshine

Promising lifestyle excellence in the tightly-held 'Raleigh Park', this light filled garden apartment provides an exclusive sanctuary of space, peace and privacy. It is placed a stroll to shops, cafes and the light rail.

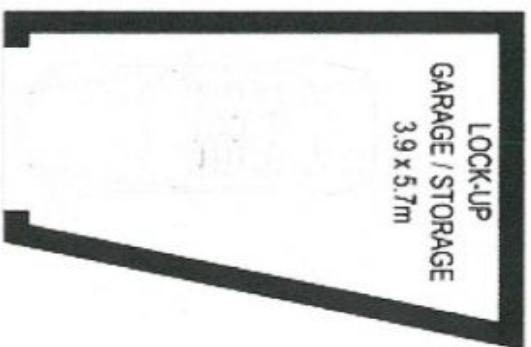
- Wonderfully spacious layout features separate living and dining areas
- Granite kitchen fitted with stainless steel appliances and dishwasher
- Sliding glass doors open to secluded courtyard bathed in sunshine
- Well scaled bedrooms appointed with mirrored built-in wardrobes
- Main bedroom with private courtyard features a full sized ensuite
- Ducted air conditioning, video security intercom, alarm, good storage
- Full tiled bathroom, separate laundry, garbage chutes on all floors
- Lift access to secure basement parking with lock-up garage and storage
- North facing for year round sun, direct access to gardens, pool and golf course
- Walk to buses, close to UNSW, shops, light rail, rapid airport access

SOLD

Council Rates: \$333/qtr (approx)
Water Rates: \$1,847/qtr (approx)
Contact: Ben Bickmore-Hutt
 0418 968 081
 Donna Burke
 0418 213 210
Type: Apartment
Sold Date: 17/07/2019



GROUND FLOOR



BASEMENT



Scale in meters. Indicative only. Dimensions are approximate. All information contained herein is gathered from sources we believe to be reliable. However we cannot guarantee its accuracy and interested persons should rely on their own enquiries.

APPROX. EXT.: 61m²



G04/91 Brompton Road, Kensington