



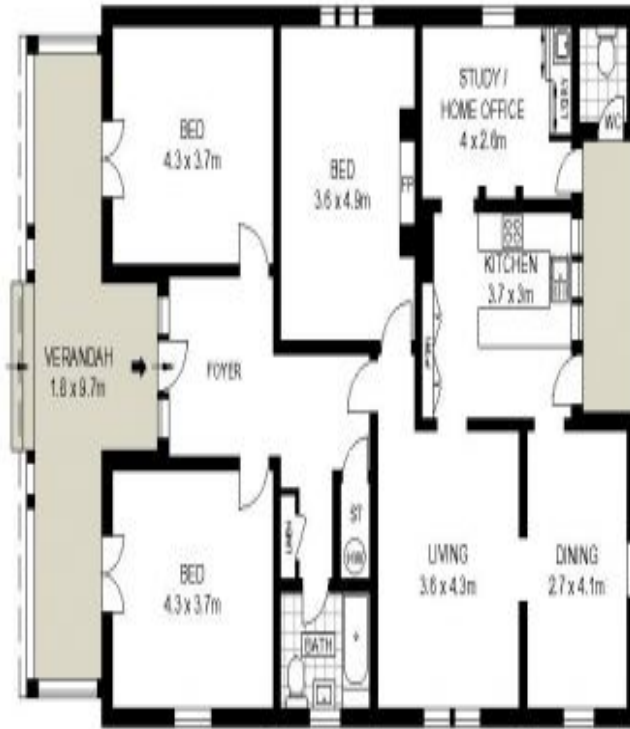
Family home of period character on 585sqm parcel

Retaining all the period grace of its early century heritage, this character sundrenched home assures comfortable family living, with great scope to further capitalise. It rests on 585sqm in a premium street, steps from everyday conveniences.

- Timber floors, wide skirtings and decorative fire place enhance old world charm
- Central hallway leads to generous lounge beneath high ornate ceiling
- Separate dining room, gas equipped kitchen and flexible study/office
- Paved alfresco area opens to expansive level backyard dotted with trees
- Ready for immediate enjoyment, scope to extend/add second storey (STCA)
- Three oversized bedrooms, French doors connect two to front verandah
- Naturally lit bathroom with shower over bath, additional external w/c
- Double brick design, picture rails, stained glass, large storage shed and solar panels
- Off street parking with side drive access to backyard
- Stroll to cafés, shops and services in Kensington and Kingsford villages
- Walk to city buses, new light rail and Kensington Park, easy access to schools/beaches

SOLD

Council Rates: \$693/qtr (approx)
Contact: Donna Burke
0418 213 210
Ben Bickmore-Hutt
0418 968 081
Type: House
Sold Date: 23/11/2018
Land: 585m2



SITE PLAN (NOT TO SCALE)



Scale in metres. Indicative only. Dimensions are approximate. All information contained herein is gathered from sources we believe to be reliable. However we cannot guarantee its accuracy and interested persons should rely on their own enquiries.



22 Mooramie Avenue, Kensington



Kensington, NSW
22 Mooramie Avenue

